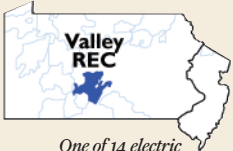


**Valley  
Rural Electric  
Cooperative, Inc.**

Your Touchstone Energy® Cooperative 



One of 14 electric cooperatives serving Pennsylvania and New Jersey

Valley Rural Electric Cooperative, Inc.  
10700 Fairgrounds Road  
P.O. Box 477  
Huntingdon, PA 16652-0477  
814/643-2650  
1-800-432-0680  
www.valleyrec.com

**BOARD OF DIRECTORS**

**James Stauffer**  
Chairman

**Leroy Barnes**  
Vice Chairman

**Kevin States**  
Secretary

**Clair McCall**  
Treasurer

**Robert Holmes**  
Allegheny Director

**David Wright**  
PREA Director

**Cindy Bigelow**  
**Mervin Brumbaugh**  
**Earl Parsons**

**CORPORATE OFFICE HOURS**

**Monday - Friday**  
7 a.m. - 5:30 p.m.

**HUNTINGDON/MARTINSBURG/SHADE GAP  
OFFICE HOURS**

**Monday - Thursday**  
7 a.m. - 5:30 p.m.

FROM THE PRESIDENT & CEO

**Trimming future problems**



by **Wayne Miller**  
President & CEO

**AS THE** dog days of summer draw to a close, I often turn my thoughts toward autumn in anticipation of its glorious, colorful foliage. I'm sure most of us would agree that we are truly blessed here in central Pennsylvania to be able to enjoy what I consider nature's most spectacular show of the year.

Sometimes as I'm driving to or from work, taking in the bright reds, oranges and yellows, I'll spot an area where the co-op's tree-trimming crews cut branches growing too close to our power lines.


Trees add so much beauty to our region. But I also take comfort in knowing power will be available when I need it. At Valley Rural Electric Cooperative, we're committed to providing you with the most reliable electric service possible. There are some things we can't prevent — high winds, ice storms, hurricanes — but we do everything in our "power" to mitigate other risks.

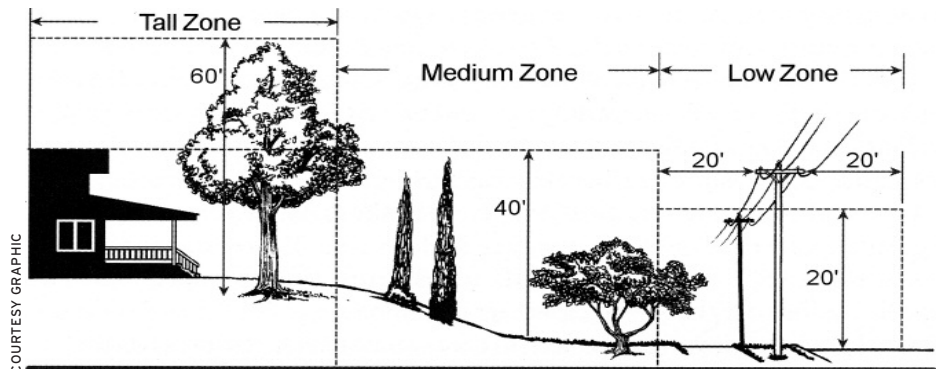
As you can probably guess, weather-related events cause the majority of power outages for electric cooperatives — nearly 20 percent according to a survey by our national service organization, the National Rural Electric Cooperative Association. But vegetation — trees, shrubs, brush — that comes in contact with power lines and distribution equip-

ment is the second leading cause of service interruptions.

To "cut back" on potential tree-related problems, Valley operates an aggressive right-of-way maintenance program. Our crews look for overhanging branches, foliage growing under lines and "danger" trees that are growing toward lines. It's a job that is never done. In fact, our maintenance cycle ensures that all 2,900 miles of Valley rights-of-way are trimmed every five years. Last year alone, we spent more than \$960,000 on right-of-way maintenance costs.

In working to keep a safe, reliable and affordable supply of power flowing to your home or business, we need your help. Let us know if you notice trees or branches that might pose a risk to our power lines. Even more important, before planting trees in your yard, think about how tall they may grow and how wide their branches may spread. As a rule of thumb, 20 feet of ground-to-sky clearance should be available on each side of our utility poles to give power lines plenty of space. Choose tree varieties with care and plant with power lines in mind.

Thanks for your help as we work together to keep electricity reliable while preserving the natural beauty around us. To report trees you think may pose a problem, call 800/432-0680 or email [memberservices@valleyrec.com](mailto:memberservices@valleyrec.com). To find out more about proper tree planting, visit [www.arborday.org](http://www.arborday.org). 



COURTESY GRAPHIC

# Valley REC sponsors 13 area students on Youth Tour to Washington, D.C.

BY SUSAN R. PENNING

*Director of Member Services*

**VALLEY RURAL ELECTRIC** Cooperative sponsored 13 high school students on the 2010 Rural Electric Youth Tour to Washington, D.C. The teens, from nine schools in five counties, departed June 13 and returned June 18.

They joined more than 1,500 other juniors and seniors from electric co-ops all over the country who participated in the event.

The all-expenses-paid trip was packed with activities, including meetings with federal legislators and rural electric leaders, visits to historic monuments throughout Washington, D.C., and tours of the Smithsonian museums, Holocaust Museum, National Zoo and Arlington Cemetery. The agenda also included a cruise on the Potomac River, a parade at the Iwo Jima Memorial and a theater production at the Kennedy Center.

"The All-States Dinner and Dance and Madame Tussauds Wax Museum were two of my favorite experiences on Youth Tour," reports Anita Park of Mapleton Depot.

"All the events were great. This trip was basically the best I've ever taken," says Miranda Powell of Huntingdon.

In addition to sightseeing, Youth Tour participants learned about the cooperative way of doing business and the principles that govern rural electric co-ops.

Recommended by guidance counselors at their respective schools, the students were selected for the trip on the basis of academic achievement, leadership in extracurricular activities and community service.

Three of the Valley REC-sponsored students are from Mount Union Area High School. They are Catherine and Mylie Myers, daughters of Douglas and Deborah Myers of Shirleysburg, and Miranda Powell, daughter of Greg and Tracey Powell.

Catherine serves as the 2010 Huntingdon County Dairy Princess. She's also



COURTESY PHOTO

president of the Captain Jack FFA and has been a member of the National Honor Society and local 4-H Club. In addition, she enjoys square dancing and playing volleyball and softball.

Recently named student of the month, Mylie is on the honor roll. She is also active in FFA, 4-H and Future Business Leaders of America. She spends her time working on her family's dairy farm.

Miranda is a member of the National Honor Society, is captain of the varsity

**V IS FOR VALLEY:** Valley's 2010 Rural Electric Youth Tour group shows its support for the cooperative during the Youth Tour trip to Washington, D.C., June 13-18.

volleyball team, and has lettered in track and field. She is also active in her church's youth group and enjoys fishing, bowling and singing.

Three more of the Valley REC-sponsored students are from Southern Huntingdon County High School. They are Jacob Chapman, son of Jerry and Teresa Chapman of Blairs Mills; Tori Cutshall,



daughter of Ronald and Laura Cutshall of Orbisonia; and Anita Park, daughter of Rodney and Thekla Park.

A member of the National Honor Society and Tri-M Music Honor Society, Jacob is an avid musician. He plays in the county, marching, concert and jazz bands. He also sings with the Blue and Gold Tones chorus and in regional, county and district choruses. In addition, he enjoys participating in school musicals and plays.

Also a member of the National Honor Society and Tri-M Music Honor Society, Tori serves as class treasurer and plays varsity field hockey. She also sings with the Blue and Gold Tones, and she volunteers for Big Brothers Big Sisters, at local senior centers and as a peer tutor.

Anita is a member of the National Honor Society and Tri-M Music Honor Society. She has lettered in varsity field hockey and is active in her church's youth group and 4-H. She also volunteers for Big Brothers Big Sisters.

Youth Tour student Emily Burkhard is from Hollidaysburg Area High School. She is the daughter of Gary and Teresa Burkhard of Duncansville. A member of the National Honor Society, Emily is active in show and concert choirs and her church youth group. She also volunteers at Altoona Hospital.

Holly Daniels, from Calvary Christian Academy in Maryland, is the daughter of Joseph and LaRae Daniels of Bedford. Holly is student body president and varsity soccer captain. She is active in her church's youth group and the math and optimist clubs at school. She also bowls and plays volleyball.

Ruth Effland was chosen for Youth Tour from Fannett-Metal High School. The daughter of Sam and Karen Effland of Fort Loudon, Ruth is a member of the National Honor Society and is volleyball manager at her school. She is active in drama club, track and her church's youth group. She also volunteers as a camp counselor.

Youth Tour student Karah Fissel hails from Biglerville High School. The daughter of James and Kathy Fissel of Arendtsville, Karah is a member of student council. She has lettered in basketball and track and was cast in her school's production of the musical

PHOTO BY SUSAN PENNING



“Grease.” In addition, she is active in Girl Scouts and in her church's youth group and choir.

Mara Hershberger of Central High School is the daughter of Daniel and Mary Hershberger of Martinsburg. Mara participates in the mock trial team at her school and has advanced to regional and state-level competitions. She is also a member of the National Honor Society and a varsity cheerleader. In addition, she is active in ballet, tap, jazz and other dance styles, and volunteers as an assistant in special needs dance classes.


Youth Tour student Morgan Mills of Southern Fulton High School is the daughter of Walter and Cathy Mills of Needmore. Morgan is a member of the National Honor Society, is the junior class

**LEARNING THE CO-OP DIFFERENCE:** Before the trip, Valley's Youth Tour students studied information about rural electric co-ops. They then took an exam that determined how much they understood about the cooperative business model.

president and president of senior high band. She is also captain of the varsity basketball team and has acted and danced in six plays and musicals. In addition, she is active in her church's youth group.

Kira Stitt of Belleville Mennonite School is the daughter of Donald and Debra Stitt of Mill Creek. Kira is a member of the National Honor Society and has earned the Kauffman History Award. She is active in choir and is president of a girl's club at her church. She also volunteers for Relay for Life.

“Thanks to (Youth Tour), I was able to develop a greater appreciation for our nation's capital, the individual sacrifices made by others to protect and preserve our freedom, and the hard work and dedication of our representatives. To meet and share this experience with other teens from all over the country was the chance of a lifetime. I hope to continue to stay in touch with my new friends, and would encourage other teens to take advantage of this amazing program,” says Tori.

To be eligible to participate in Youth Tour, students must be juniors or seniors in high school and must be sons or daughters of co-op members or employees. For more information about the Rural Electric Youth Tour, contact the member services department at Valley REC at 800/432-0680 or email [memberservices@valleyrec.com](mailto:memberservices@valleyrec.com). 

COURTESY PHOTO



**MONKEY BUSINESS:** On the trip, Youth Tour student Tori Cutshall, who represented Valley REC in the Youth Leadership Council competition, stops for a photo at the National Zoo.



# Meet your employees

BY SUSAN R. PENNING  
Director of Member Services

Highlighted in this column is a recent addition to the Valley REC team, Matt Andradi. Matt came to work at the co-op part time last summer as a geographical information systems (GIS) technician. In December 2009, he was hired full time as a GIS and automated/field mapping technician.

One of Matt's main responsibilities is to add new equipment locations using the co-op's digital mapping software.

"I also make sure the digital mapping information is imported accurately and displays correctly in Valley's customer information system," he adds.

In addition, he verifies that all digitally recorded poles, lines and equipment match exactly with what is out in the



Matt Andradi

field. And he corrects discrepancies when necessary, renumbering poles and pad-mounted transformers to ensure they are properly inventoried.

Matt came to Valley with a very specific set of skills, meeting the co-op's needs perfectly.

He graduated from Kutztown University with a Bachelor of Arts degree in geography. While in school, he learned his way around digital mapping software and GPS equipment. In fact, he worked with the same software used at Valley.

After graduation, Matt worked for Davey Resource Group, headquartered in

Georgia. He was hired as a GPS technician and mapper. While at DRG, Matt spent a lot of his time on a four-wheeler, inventorying poles and equipment for rural utilities around the country.

Matt was one of the DRG technicians hired by Valley when the co-op performed its own system-wide inventory. While working here, Matt fell in love with the Huntingdon area (and a local young lady), so he jumped at the chance to fill a position at the co-op.

A native of Hazleton, Pa., Matt is the son of Tom and Diane Andradi of Hazleton. He has one sister, Noelle, who lives in Huntingdon.

Matt and his fiancé, Rachel Rarich of McClure, plan to marry this October. In their spare time, they enjoy hiking, camping and other outdoor activities.

"I'm accomplishing some of my biggest life goals," Matt says. "I'm getting married, I bought a house, and I am doing what I went to school for."







Matt's fellow co-op employees look forward to working with him for a long time. He's one of the people you can count on. ☀

**Landscaping REDUCES** direct summer sunlight and cold winter winds.

Without landscaping a heating and air conditioning system has to work **HARDER.**

## Be Prepared Before the Storm

Here are some basic items you should store in your home in case of emergency:

-  **Water:** Three day supply, one gallon per person per day
-  **Food:** Three day supply, non-perishable, high-energy
-  **Clothing, bedding, and sanitation supplies**
-  **Tools:** Can opener, plates, utensils, flashlight, batteries, cash, bleach, hand sanitizer
-  **First aid supplies, medicine**
-  **Important documents**



Source: American Red Cross, Federal Emergency Management Agency